

## ***Avoidable Hazards***

*Pool ladders shall be removed and stored away safely to prevent unauthorized use of the pool. Fence gates shall be self-closing and latching and outfitted with a padlock when the pool or yard is left unattended. Other entry openings shall also be protected with closure devices or alarms.*

***Code Officials Association*** is a collaboration of area municipalities for the purpose of disseminating codes information. Generally, most codes officials and municipalities are required to issue permits and provide inspections based on the New York State Residential Building Code.

## **DISCLAIMER**

This brochure was prepared to address the most frequently asked questions and does not attempt to list all applicable requirements.

Contact your local Building Department with any questions and for permit information.

Town of Clarkson 637-1145  
[www.clarksonny.org](http://www.clarksonny.org)  
Town of Clarendon 638-6371 x 104  
[www.townofclarendon.org](http://www.townofclarendon.org)  
Town of Chili 889-6143  
[www.townofchile.org](http://www.townofchile.org)  
Town of Gates 247-6100  
[www.townofgates.org](http://www.townofgates.org)  
Town of Greece 225-2000  
[www.greecenyny.gov](http://www.greecenyny.gov)

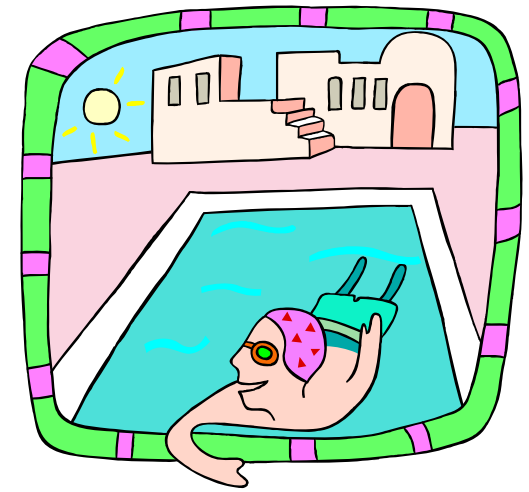
Town of Hamlin 964-8181  
[www.hamlinny.org](http://www.hamlinny.org)  
Town of Henrietta 359-7060  
[www.henrietta.org](http://www.henrietta.org)  
Town of Irondequoit 336-6026  
[www.irondequoit.org](http://www.irondequoit.org)  
Town of Mendon 624-6066  
[www.townofmendow.org](http://www.townofmendow.org)  
Town of Ogden 617-6195  
[www.ogdenny.org](http://www.ogdenny.org)  
Town of Parma 392-9449  
[www.parmany.org](http://www.parmany.org)  
Town of Penfield 340-8636  
[www.penfield.org](http://www.penfield.org)  
Town of Perinton 223-0770  
[www.perinton.org](http://www.perinton.org)  
Town of Pittsford 248-6265  
[www.townofpittsford.org](http://www.townofpittsford.org)  
Town of Riga 293-3880  
[www.townofriga.org](http://www.townofriga.org)  
Town of Sweden 637-8684  
[www.townofsweden.org](http://www.townofsweden.org)  
Town of Webster 872-7036  
[www.ci.webster.ny.us](http://www.ci.webster.ny.us)  
Town of Wheatland 889-1553 #3  
[www.townofwheatland.org](http://www.townofwheatland.org)  
Village of Brockport 637-1047  
[www.brockportny.org](http://www.brockportny.org)  
Village of Churchville 293-3720  
[www.churchville.net](http://www.churchville.net)  
Village of E. Rochester 385-3513  
[www.eastrochester.org](http://www.eastrochester.org)  
Village of Fairport 223-0313  
[www.village.fairport.ny.us](http://www.village.fairport.ny.us)  
Village of Hilton 392-4144  
[www.hiltonny.org](http://www.hiltonny.org)  
Village of Honeoye Falls 624-6150  
[www.villageofhoneoyefalls.org](http://www.villageofhoneoyefalls.org)  
Village of Pittsford 586-4332  
[www.villageofpittsford.org](http://www.villageofpittsford.org)  
Village of Spencerport 352-2145  
[www.vil.spencerport.ny.us](http://www.vil.spencerport.ny.us)  
Village of Webster 265-3770  
[www.villageofwebster.com](http://www.villageofwebster.com)

---

## SWIMMING POOLS

---

### ***Code Officials Association***



SWIMMING POOLS, SPAS, AND HOT TUBS ARE REGULATED BY MOST MUNICIPAL BUILDING DEPARTMENTS. GENERALLY, ANY POOL, SPA OR HOT TUB WITH A WATER DEPTH GREATER THAN 24" REQUIRES THE ISSUANCE OF A PERMIT AND A SAFETY INSPECTION BEFORE USE CAN BE AUTHORIZED.

## PRIVATE SWIMMING POOLS

The installation or erection of a new or replacement pool, spa or hot tub requires that you complete a permit application, submit a copy of your property tape location or instrument survey map and pay a fee.

If required, provide on the map the proposed location of the pool, spa or hot tub and any general information such as location of overhead power lines, swales, easements or accessory buildings or structures that may be not shown on the property map.

## LOCATION

Pool location is regulated by the local municipality's Zoning requirements and varies greatly. Contact your local Building Department for any setback constraints from property lines or structures.

## OVERHEAD ELECTRICAL LINES

POOLS, SPAS OR HOT TUBS SHALL BE SET AWAY AT LEAST 10' FROM OVERHEAD POWER LINES, or as approved.

## ELECTRICAL

Pools, spas and hot tubs require permanent electrical provisions be installed that shall be inspected by a third party electrical inspection agency before authorized use.

Most municipalities can assist you with electrical information and/or electrical inspection agencies.

Non-permanent (temporary) pools, spas or hot tubs that are provided with electrical connections require that the power supply to the equipment be protected by a ground fault protected outlet or circuit breaker. Extension cords shall be sized according to the electrical needs of the equipment with cords fastened and/or protected from physical damage when in use.

## FENCES

Enclosures (fences) of above ground pools are generally not required provided that the pool walls are not less than 48" high from grade. Otherwise, pool walls or soft-sided type pools require a 48" high fence or other suitable barrier around the pool area to prevent entry. Spas or hot tubs do not require a fence, but do require a lockable hard cover to be in place when the spa or tub is not in use.

## ALARMS

All permanent and temporary pools require a pool alarm device.

## DECKS AND POOL DECKS

Spas or hot tubs that are to be placed on new or existing decks may necessitate additional structural information be supplied to the Building Department to assure that the spa or hot tub has adequate support. Generally, pool or accessory decks for pool areas require compliance and building permits. Contact your local Building Department.

POOLS, SPAS OR HOT TUBS ARE TO BE INSPECTED BOTH FOR ELECTRICAL AND CODE COMPLIANCE BEFORE THE POOL, SPA OR HOT TUB CAN BE USED.

## WASTEWATER DISCHARGE

Although it is perfectly safe to enjoy pools and spas when their waters are treated properly, that same water in our stormwater system, creeks or streams can be hazardous for aquatic life and our environment.

**Do not drain pools, hot tubs or spas down a driveway or into a storm sewer.** Instead, drain slowly to the lawn or other landscaped area of your property.

## WATER TREATMENT CHEMICALS

When using water treatment chemicals, purchase only the amount of chemicals needed to do the job. If chemicals need to be stored, place in a covered, yet well ventilated area. Thoroughly read all information provided on chemical container labels.